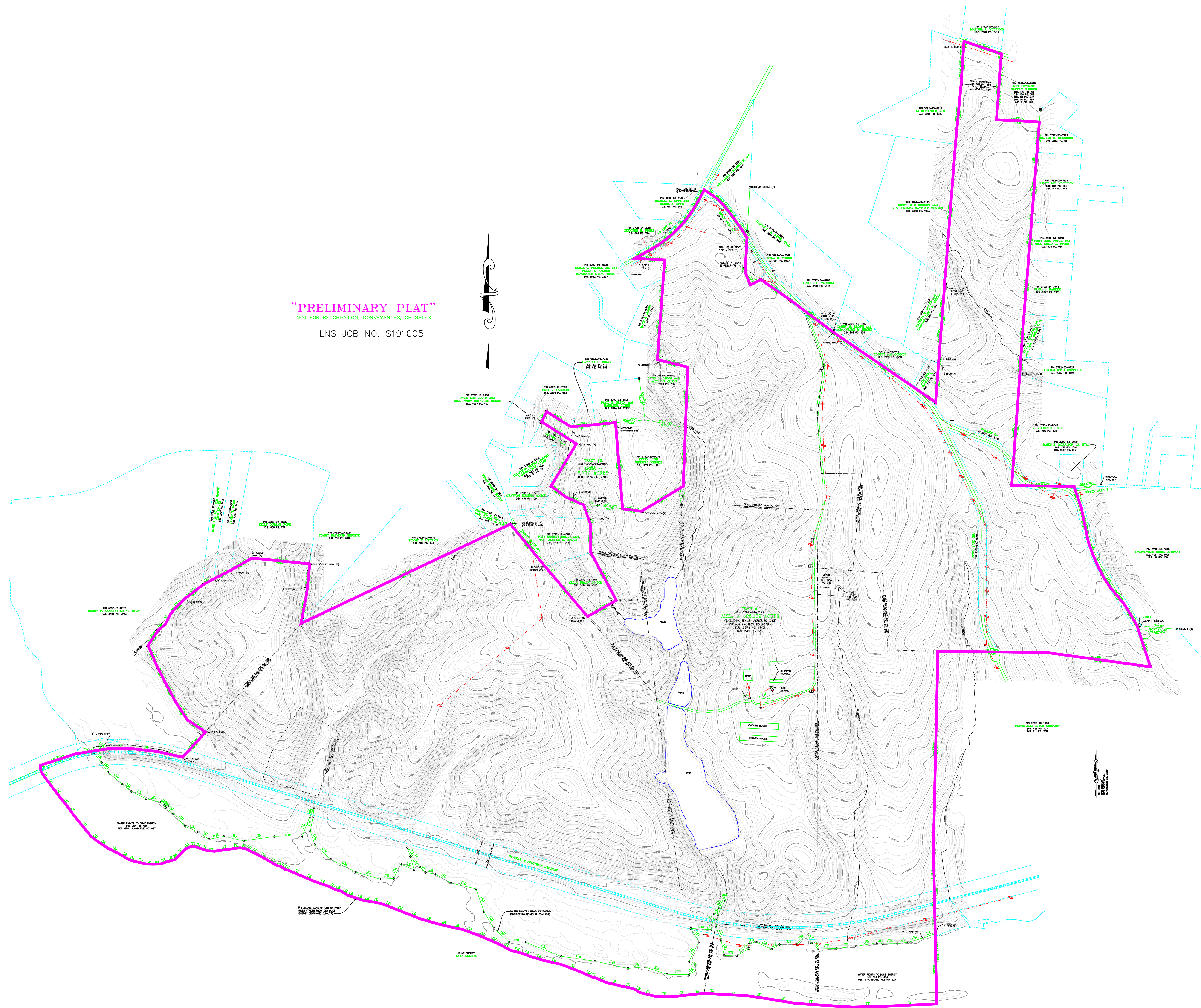


**"PRELIMINARY PLAT"**

NOT FOR RECORDATION, CONVEYANCES, OR SALES

LNS JOB NO. S191005



WATER RIGHTS TO BANG CHERRY  
REF. APL. 2004-112-PC-007

IF FOLLOW BOUND OF OLD CATAWA  
RIVER FROM 1900-02-001  
DRAFT DRAWING (11-1-77)

WATER RIGHTS TO BANG CHERRY  
PROJECT BOUNDARY (11-1-77)

WATER RIGHTS TO BANG CHERRY  
REF. APL. 2004-112-PC-007